

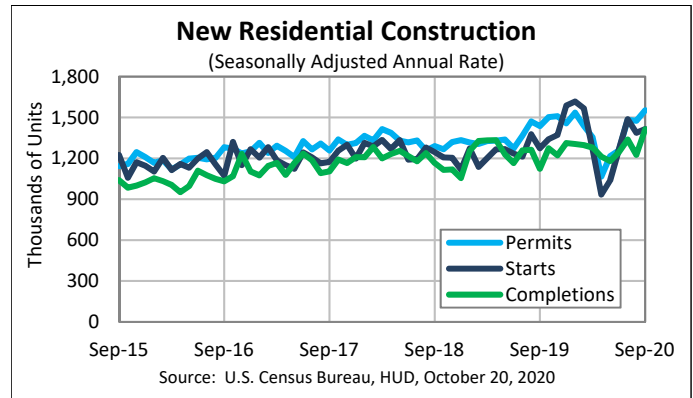
FOR RELEASE AT 8:30 AM EDT, TUESDAY, OCTOBER 20, 2020

MONTHLY NEW RESIDENTIAL CONSTRUCTION, SEPTEMBER 2020

Release Number: CB20-155

October 20, 2020 - The U.S. Census Bureau and the U.S. Department of Housing and Urban Development jointly announced the following new residential construction statistics for September 2020:

NEW RESIDENTIAL CONSTRUCTION SEPTEMBER 2020	
Building Permits:	1,553,000
Housing Starts:	1,415,000
Housing Completions:	1,413,000
Next Release: November 18, 2020	
Seasonally Adjusted Annual Rate	
Source: U.S. Census Bureau, HUD, October 20, 2020	



Building Permits

Privately-owned housing units authorized by building permits in September were at a seasonally adjusted annual rate of 1,553,000. This is 5.2 percent (± 1.6 percent) above the revised August rate of 1,476,000 and is 8.1 percent (± 1.8 percent) above the September 2019 rate of 1,437,000. Single-family authorizations in September were at a rate of 1,119,000; this is 7.8 percent (± 1.1 percent) above the revised August figure of 1,038,000. Authorizations of units in buildings with five units or more were at a rate of 390,000 in September.

Housing Starts

Privately-owned housing starts in September were at a seasonally adjusted annual rate of 1,415,000. This is 1.9 percent (± 8.8 percent)* above the revised August estimate of 1,388,000 and is 11.1 percent (± 11.3 percent)* above the September 2019 rate of 1,274,000. Single-family housing starts in September were at a rate of 1,108,000; this is 8.5 percent (± 9.2 percent)* above the revised August figure of 1,021,000. The September rate for units in buildings with five units or more was 295,000.

Housing Completions

Privately-owned housing completions in September were at a seasonally adjusted annual rate of 1,413,000. This is 15.3 percent (± 11.4 percent) above the revised August estimate of 1,226,000 and is 25.8 percent (± 11.5 percent) above the September 2019 rate of 1,123,000. Single-family housing completions in September were at a rate of 921,000; this is 2.1 percent (± 9.0 percent)* above the revised August rate of 902,000. The September rate for units in buildings with five units or more was 480,000.

Data Inquiries

Economic Indicators Division, Residential Construction Branch
301-763-5160
eid.rcb.customer.service@census.gov

Media Inquiries

Public Information Office
301-763-3030
pio@census.gov



U.S. Department of Commerce
U.S. CENSUS BUREAU
census.gov



The October report is scheduled for release on November 18, 2020. View the full schedule in the Economic Briefing Room: <www.census.gov/economic-indicators/>. The full text and tables for this release can be found at <www.census.gov/construction/nrc/>.

EXPLANATORY NOTES

In interpreting changes in the statistics in this release, note that month-to-month changes in seasonally adjusted statistics often show movements which may be irregular. It may take three months to establish an underlying trend for building permit authorizations, six months for total starts, and six months for total completions. The statistics in this release are estimated from sample surveys and are subject to sampling variability as well as nonsampling error including bias and variance from response, nonreporting, and undercoverage. Estimated relative standard errors of the most recent data are shown in the tables. Whenever a statement such as “2.5 percent (± 3.2 percent) above” appears in the text, this indicates the range (-0.7 to +5.7 percent) in which the actual percentage change is likely to have occurred. All ranges given for percentage changes are 90 percent confidence intervals and account only for sampling variability. If a range does not contain zero, the change is statistically significant. If it does contain zero, the change is not statistically significant; that is, it is uncertain whether there was an increase or decrease. The same policies apply to the confidence intervals for percentage changes shown in the tables. On average, the preliminary seasonally adjusted estimates of total building permits, housing starts and housing completions are revised 2.3 percent or less. Explanations of confidence intervals and sampling variability can be found on our website. <www.census.gov/construction/nrc/how_the_data_are_collected/>

API

The Census Bureau’s application programming interface lets developers create custom apps to reach new users and makes key demographic, socio-economic and housing statistics more accessible than ever before. <www.census.gov/developers/>

FRED Mobile App



Receive the latest updates on the nation’s key economic indicators by downloading the FRED App <<https://fred.stlouisfed.org/fred-mobile/>> for both Apple and Android devices. FRED, the signature database of the Federal Reserve Bank of St. Louis, now incorporates the Census Bureau’s 13 economic indicators.

###

* The 90 percent confidence interval includes zero. In such cases, there is insufficient statistical evidence to conclude that the actual change is different from zero.

Data Inquiries

Economic Indicators Division, Residential Construction Branch
301-763-5160
eid.rcb.customer.service@census.gov

Media Inquiries

Public Information Office
301-763-3030
pio@census.gov



U.S. Department of Commerce
U.S. CENSUS BUREAU
census.gov



New Privately-Owned Housing Units Authorized in Permit-Issuing Places

(Thousands of Units. Detail may not add to total because of rounding.)

Table 1a - Seasonally adjusted annual rate

Period	United States				Northeast		Midwest		South		West	
	Total	1 unit	2 to 4 units	5 units or more	Total	1 unit	Total	1 unit	Total	1 unit	Total	1 unit
2019												
September	1,437	900	36	501	131	48	177	124	756	518	373	210
October	1,503	929	48	526	155	50	183	121	790	532	375	226
November	1,510	935	41	534	172	57	208	113	759	528	371	237
December	1,457	940	43	474	147	49	208	129	720	528	382	234
2020												
January	1,536	977	43	516	179	67	217	135	754	540	386	235
February	1,438	994	45	399	131	66	197	134	732	541	378	253
March	1,356	884	46	426	112	55	174	111	723	513	347	205
April	1,066	666	33	367	61	32	141	90	612	408	252	136
May	1,216	746	42	428	110	48	165	101	657	431	284	166
June	1,258	840	40	378	122	55	181	119	663	471	292	195
July	1,483	977	45	461	137	58	224	133	750	557	372	229
August (r)	1,476	1,038	52	386	120	59	188	137	798	597	370	245
September (p)	1,553	1,119	44	390	151	71	206	146	814	633	382	269
Average RSE (%) ¹	2	2	3	2	3	5	4	4	2	2	2	3
Percent Change ²												
Sep. 2020 from Aug. 2020	5.2%	7.8%	-15.4%	1.0%	25.8%	20.3%	9.6%	6.6%	2.0%	6.0%	3.2%	9.8%
90 percent confidence interval ³	± 1.6	± 1.1	± 5.0	± 5.4	± 4.4	± 8.2	± 7.4	± 3.3	± 1.0	± 0.7	± 2.7	± 2.1
Sep. 2020 from Sep. 2019	8.1%	24.3%	22.2%	-22.2%	15.3%	47.9%	16.4%	17.7%	7.7%	22.2%	2.4%	28.1%
90 percent confidence interval ³	± 1.8	± 2.1	± 8.9	± 2.4	± 5.7	± 11.3	± 5.3	± 3.9	± 2.3	± 2.7	± 3.2	± 3.9

Table 1b - Not seasonally adjusted

Period	United States				Northeast		Midwest		South		West	
	Total	1 unit	2 to 4 units	5 units or more	Total	1 unit	Total	1 unit	Total	1 unit	Total	1 unit
2018 Annual	1,328.8	855.3	39.7	433.8	123.4	53.9	185.5	117.9	677.1	474.9	342.8	208.7
2019 Annual	1,386.0	862.1	42.6	481.4	141.2	52.7	184.8	114.2	710.3	486.2	349.8	209.0
RSE (%)	X	X	X	X	X	X	X	X	X	X	X	X
2019 Year to date	1,021.4	647.8	31.0	342.5	99.5	39.6	137.0	87.0	529.7	364.6	255.2	156.6
2020 Year to date	1,058.7	712.2	32.9	313.7	95.4	42.4	143.1	95.6	563.6	408.5	256.5	165.7
RSE (%)	2	2	2	1	2	4	3	4	2	2	2	3
Year to date percent change²	3.7%	9.9%	6.1%	-8.4%	-4.1%	7.1%	4.5%	9.9%	6.4%	12.0%	0.5%	5.8%
90 percent confidence interval ³	± 0.5	± 0.6	± 3.2	± 1.7	± 1.7	± 3.2	± 2.6	± 2.1	± 0.5	± 0.7	± 1.2	± 1.8
2019												
September	118.3	71.9	3.2	43.2	11.1	4.2	16.4	11.2	61.1	40.3	29.6	16.3
October	135.8	81.2	4.4	50.2	14.1	4.7	19.3	12.0	69.3	45.3	33.1	19.3
November	111.0	65.0	3.0	42.9	13.7	4.4	15.6	8.1	53.3	36.3	28.3	16.2
December	110.7	64.2	3.2	43.3	13.0	3.3	12.8	7.3	53.7	36.7	31.3	17.0
2020												
January	112.8	70.4	3.0	39.5	12.3	4.1	12.1	6.8	60.6	42.6	27.8	16.8
February	100.2	70.8	3.2	26.2	7.9	4.0	10.3	7.2	55.1	41.5	26.9	18.2
March	115.9	78.3	3.9	33.8	9.2	4.4	13.7	9.1	63.4	46.8	29.6	18.0
April	96.0	63.3	2.8	29.8	4.9	2.9	13.8	9.1	54.6	38.4	22.7	12.9
May	104.4	66.1	3.3	35.1	9.2	4.3	15.5	9.9	55.6	37.2	24.2	14.7
June	124.0	84.3	3.9	35.8	12.9	5.8	18.2	12.9	63.4	45.4	29.4	20.2
July	135.4	92.1	4.2	39.1	12.7	5.7	21.3	13.4	68.7	51.4	32.6	21.6
August (r)	126.2	89.9	4.6	31.7	9.9	5.2	17.6	12.6	68.4	51.1	30.3	21.0
September (p)	134.2	95.3	4.0	34.9	13.6	6.7	19.8	14.1	69.0	52.2	31.8	22.3
Average RSE (%) ¹	2	2	3	2	3	5	4	4	2	2	2	3

p Preliminary

r Revised

S Does not meet publication standards because tests for identifiable and stable seasonality do not meet reliability standards

X Not applicable

¹ Average relative standard error for the latest 6-month period

² Computed using unrounded data

³ If the 90 percent confidence interval includes zero, there is insufficient evidence to conclude that the actual change is different from zero

Note: Year-to-date permits estimates reflect revisions not distributed to months.

Source: U.S. Census Bureau and U.S. Department of Housing and Urban Development, New Residential Construction, October 20, 2020. Additional information on the survey methodology may be found at <www.census.gov/construction/nrc/how_the_data_are_collected/>.

New Privately-Owned Housing Units Authorized, but Not Started, at End of Period

(Thousands of Units. Detail may not add to total because of rounding.)

Table 2a - Seasonally adjusted

Period	United States				Northeast		Midwest		South		West	
	Total	1 unit	2 to 4 units	5 units or more	Total	1 unit	Total	1 unit	Total	1 unit	Total	1 unit
2019												
September	172	85	S	85	11	5	14	8	92	50	55	22
October	187	87	S	97	17	6	15	9	98	50	57	22
November	196	92	S	102	19	7	17	10	103	52	57	23
December	182	89	S	91	17	6	17	10	94	50	54	23
2020												
January	176	89	S	84	16	6	17	10	94	51	49	22
February	166	89	S	75	16	6	17	10	83	47	50	26
March	159	89	S	68	17	7	12	8	82	50	48	24
April	163	89	S	72	16	8	12	7	84	50	51	24
May	171	93	S	76	15	8	13	8	94	54	49	23
June	164	91	S	71	14	8	13	8	91	52	46	23
July (r)	167	93	S	71	13	7	13	8	91	54	50	24
August (r)	173	100	S	71	14	8	13	8	94	59	52	25
September (p)	180	104	S	74	16	10	14	10	95	58	55	26
Average RSE (%) ¹	5	7	X	8	16	19	9	11	7	8	9	15
Percent Change ²												
Sep. 2020 from Aug. 2020	4.0%	4.0%	S	4.2%	14.3%	25.0%	7.7%	25.0%	1.1%	-1.7%	5.8%	4.0%
90 percent confidence interval ³	± 4.1	± 7.1	X	± 6.1	± 25.2	± 41.7	± 8.3	± 11.5	± 4.6	± 7.4	± 5.1	± 8.9
Sep. 2020 from Sep. 2019	4.7%	22.4%	S	-12.9%	45.5%	100.0%	0.0%	25.0%	3.3%	16.0%	0.0%	18.2%
90 percent confidence interval ³	± 8.9	± 12.7	X	± 10.8	± 55.8	± 83.1	± 19.4	± 21.8	± 12.1	± 16.7	± 13.9	± 16.8

Table 2b - Not seasonally adjusted

Period	United States				Northeast		Midwest		South		West	
	Total	1 unit	2 to 4 units	5 units or more	Total	1 unit	Total	1 unit	Total	1 unit	Total	1 unit
2019												
September	167.0	81.1	2.0	83.9	11.0	5.1	13.4	7.9	90.6	47.9	51.9	20.1
October	184.5	87.0	2.6	94.9	15.6	6.1	15.3	9.0	98.9	50.4	54.8	21.5
November	186.2	86.4	1.6	98.1	17.2	6.6	16.8	8.2	97.8	50.9	54.4	20.7
December	181.7	84.6	1.8	95.3	17.4	5.6	15.0	8.0	95.0	47.8	54.3	23.2
2020												
January	177.6	89.1	2.5	85.9	15.7	5.7	17.2	9.0	94.6	51.6	50.1	22.8
February	165.2	87.2	2.0	76.1	15.7	6.1	16.6	9.4	83.0	46.0	50.0	25.7
March	161.2	91.6	2.0	67.6	16.9	7.7	12.7	8.8	81.9	50.5	49.7	24.5
April	166.7	93.8	1.7	71.3	16.0	7.9	13.3	8.8	84.5	51.7	53.0	25.3
May	172.0	95.4	1.7	74.9	15.5	8.9	13.4	8.7	93.7	54.1	49.4	23.6
June	169.8	93.7	2.4	73.6	14.9	8.6	12.0	8.2	94.5	52.9	48.4	24.1
July (r)	168.2	96.4	2.6	69.2	13.5	7.3	12.9	8.6	90.9	55.9	50.8	24.6
August (r)	170.3	98.5	2.3	69.6	14.1	7.6	11.5	8.0	94.0	58.6	50.7	24.2
September (p)	178.9	103.0	1.9	74.0	15.8	10.1	13.9	9.9	97.1	57.8	52.0	25.2
Average RSE (%) ¹	5	7	5.2	8	16	19	9	11	7	8	9	15

p Preliminary

r Revised

S Does not meet publication standards because tests for identifiable and stable seasonality do not meet reliability standards

X Not applicable

¹ Average relative standard error for the latest 6-month period

² Computed using unrounded data

³ See the Explanatory Notes in the accompanying text for an explanation of 90 percent confidence intervals

Note: These data represent the number of housing units authorized in all months up to and including the last day of the reporting period and not started as of that date without regard to the months of original permit issuance. Cancelled, abandoned, expired, and revoked permits are excluded.

Source: U.S. Census Bureau and U.S. Department of Housing and Urban Development, New Residential Construction, October 20, 2020.

Additional information on the survey methodology may be found at <www.census.gov/construction/nrc/how_the_data_are_collected/>.

New Privately-Owned Housing Units Started

(Thousands of Units. Detail may not add to total because of rounding.)

Table 3a - Seasonally adjusted annual rate

Period	United States				Northeast		Midwest		South		West	
	Total	1 unit	2 to 4 units	5 units or more	Total	1 unit	Total	1 unit	Total	1 unit	Total	1 unit
2019												
September	1,274	906	S	357	115	60	158	117	693	520	308	209
October	1,340	911	S	417	116	39	178	116	691	532	355	224
November	1,371	933	S	419	106	65	170	110	742	511	353	247
December	1,587	1,047	S	520	141	66	238	164	796	580	412	237
2020												
January	1,617	989	S	619	217	65	172	139	792	517	436	268
February	1,567	1,034	S	514	121	62	197	142	869	601	380	229
March	1,269	880	S	376	84	58	162	117	705	461	318	244
April	934	679	S	240	50	23	135	100	569	412	180	144
May	1,038	728	S	302	69	35	142	97	513	407	314	189
June	1,265	891	S	367	116	76	210	135	646	481	293	199
July (r)	1,487	992	S	485	131	72	209	136	839	562	308	222
August (r)	1,388	1,021	S	346	87	58	245	159	711	548	345	256
September (p)	1,415	1,108	S	295	145	70	165	133	755	645	350	260
Average RSE (%) ¹	5	4	X	13	19	18	10	7	6	6	8	8
Percent Change ²												
Sep. 2020 from Aug. 2020	1.9%	8.5%	S	-14.7%	66.7%	20.7%	-32.7%	-16.4%	6.2%	17.7%	1.4%	1.6%
90 percent confidence interval ³	± 8.8	± 9.2	X	± 21.9	± 53.7	± 35.0	± 10.0	± 10.1	± 14.3	± 16.6	± 13.8	± 13.0
Sep. 2020 from Sep. 2019	11.1%	22.3%	S	-17.4%	26.1%	16.7%	4.4%	13.7%	8.9%	24.0%	13.6%	24.4%
90 percent confidence interval ³	± 11.3	± 9.6	X	± 23.8	± 48.7	± 36.1	± 16.0	± 19.4	± 18.1	± 16.6	± 19.7	± 19.1

Table 3b - Not seasonally adjusted

Period	United States				Northeast		Midwest		South		West	
	Total	1 unit	2 to 4 units	5 units or more	Total	1 unit	Total	1 unit	Total	1 unit	Total	1 unit
2018 Annual	1,249.9	875.8	13.9	360.3	110.9	64.5	172.6	123.4	630.3	465.5	336.1	222.4
2019 Annual	1,290.0	887.7	13.4	388.9	114.8	57.1	169.4	119.8	684.8	496.9	321.0	213.9
RSE (%)	2	1	22	6	4	5	4	2	2	1	3	2
2019 Year to date	963.5	674.1	9.3	280.1	85.7	43.7	124.3	90.5	516.7	377.3	236.8	162.5
2020 Year to date	1,016.2	715.6	9.5	291.0	84.6	43.8	138.0	97.8	546.2	401.5	247.4	172.5
RSE (%)	2	1	25	5	5	6	3	3	2	2	3	2
Year to date percent change²	5.5%	6.2%	2.1%	3.9%	-1.4%	0.2%	11.0%	8.0%	5.7%	6.4%	4.5%	6.2%
90 percent confidence interval ³	± 2.9	± 2.8	± 43.2	± 7.5	± 8.9	± 8.0	± 7.4	± 7.3	± 4.0	± 3.9	± 5.0	± 4.3
2019												
September	113.2	78.6	1.0	33.6	10.7	5.6	15.3	11.4	60.2	44.0	27.0	17.7
October	114.8	76.8	1.1	36.9	10.6	3.8	17.1	11.6	56.8	42.7	30.2	18.6
November	103.4	68.0	1.5	33.9	8.5	5.2	13.7	8.8	55.0	36.4	26.1	17.6
December	108.3	68.9	1.5	37.9	9.9	4.4	14.2	8.9	56.3	40.5	27.9	15.2
2020												
January	113.1	67.4	0.7	45.0	15.1	4.0	9.0	6.6	58.7	38.7	30.3	18.1
February	111.6	73.0	1.4	37.2	7.5	3.2	10.8	6.8	66.3	46.9	27.0	16.1
March	104.5	74.0	1.0	29.5	6.3	4.3	11.3	7.8	60.2	41.0	26.6	20.8
April	84.9	63.1	1.3	20.5	4.4	2.1	12.4	9.5	51.3	37.9	16.7	13.7
May	95.1	67.5	0.7	26.9	6.2	3.1	14.4	10.4	45.7	36.3	28.8	17.7
June	118.8	86.8	0.6	31.4	11.2	7.8	20.7	14.4	59.5	45.4	27.3	19.2
July (r)	138.7	93.9	0.9	43.8	12.8	7.5	20.7	14.1	76.3	51.2	28.8	21.0
August (r)	124.5	92.7	1.8	30.0	7.8	5.2	22.7	15.3	62.7	48.6	31.3	23.6
September (p)	125.0	97.3	1.1	26.7	13.3	6.5	15.9	13.0	65.5	55.5	30.4	22.3
Average RSE (%) ¹	5	4	56	13	19	18	10	7	6	6	8	8

p Preliminary

r Revised

S Does not meet publication standards because tests for identifiable and stable seasonality do not meet reliability standards

X Not applicable

¹ Average relative standard error for the latest 6-month period

² Computed using unrounded data

³ See the Explanatory Notes in the accompanying text for an explanation of 90 percent confidence intervals

Source: U.S. Census Bureau and U.S. Department of Housing and Urban Development, New Residential Construction, October 20, 2020.

Additional information on the survey methodology may be found at <www.census.gov/construction/nrc/how_the_data_are_collected/>.

New Privately-Owned Housing Units Under Construction at End of Period

(Thousands of Units. Detail may not add to total because of rounding.)

Table 4a - Seasonally adjusted

Period	United States				Northeast		Midwest		South		West	
	Total	1 unit	2 to 4 units	5 units or more	Total	1 unit	Total	1 unit	Total	1 unit	Total	1 unit
2019												
September	1,156	521	S	624	178	58	146	76	501	249	331	138
October	1,155	520	S	624	178	56	147	76	499	250	331	138
November	1,169	522	S	636	177	56	149	76	508	249	335	141
December	1,183	527	S	644	171	56	155	78	517	252	340	141
2020												
January	1,203	534	S	657	178	55	156	80	526	255	343	144
February	1,221	537	S	672	178	55	156	79	542	261	345	142
March	1,217	533	S	671	179	56	154	77	539	255	345	145
April	1,192	515	S	664	178	54	152	75	528	245	334	141
May	1,177	508	S	657	174	54	147	73	519	239	337	142
June	1,184	509	S	663	175	55	150	74	522	239	337	141
July (r)	1,197	514	S	672	177	55	154	75	533	244	333	140
August (r)	1,209	525	S	672	176	56	157	79	541	250	335	140
September (p)	1,209	539	S	659	179	57	153	79	541	261	336	142
Average RSE (%) ¹	3	3	X	6	7	6	5	4	4	5	6	7
Percent Change ²												
Sep. 2020 from Aug. 2020	0.0%	2.7%	S	-1.9%	1.7%	1.8%	-2.5%	0.0%	0.0%	4.4%	0.3%	1.4%
90 percent confidence interval ³	± 0.9	± 1.1	X	± 1.2	± 2.5	± 2.5	± 2.4	± 2.4	± 1.5	± 1.9	± 1.3	± 2.1
Sep. 2020 from Sep. 2019	4.6%	3.5%	S	5.6%	0.6%	-1.7%	4.8%	3.9%	8.0%	4.8%	1.5%	2.9%
90 percent confidence interval ³	± 2.8	± 3.1	X	± 4.3	± 8.4	± 7.6	± 7.6	± 4.2	± 4.6	± 5.1	± 4.4	± 5.7

Table 4b - Not seasonally adjusted

Period	United States				Northeast		Midwest		South		West	
	Total	1 unit	2 to 4 units	5 units or more	Total	1 unit	Total	1 unit	Total	1 unit	Total	1 unit
2019												
September	1,175.9	542.7	11.1	622.0	179.6	59.5	150.1	80.5	509.3	258.0	336.9	144.7
October	1,169.3	535.4	10.8	623.1	179.2	57.4	151.4	80.4	504.0	255.7	334.7	141.9
November	1,173.1	524.4	11.5	637.2	177.5	56.3	152.4	79.4	506.8	246.9	336.3	141.8
December	1,157.9	505.6	12.0	640.3	169.1	55.1	154.2	77.8	501.4	237.9	333.2	134.7
2020												
January	1,179.0	508.9	11.9	658.2	176.9	54.1	152.4	76.1	513.8	242.3	335.9	136.4
February	1,198.1	512.8	12.3	673.0	176.6	53.1	150.5	73.4	533.1	251.4	337.9	134.9
March	1,199.9	514.8	12.8	672.3	177.1	53.6	148.9	71.5	534.4	250.3	339.5	139.4
April	1,189.2	509.7	13.1	666.4	177.7	53.6	147.9	70.7	529.3	245.0	334.4	140.5
May	1,183.3	510.1	11.8	661.4	173.9	53.5	146.1	71.4	523.5	241.6	339.8	143.6
June	1,193.2	517.7	11.6	663.8	175.2	55.4	150.9	74.5	527.9	244.7	339.2	143.2
July (r)	1,215.6	532.8	11.1	671.8	178.7	56.7	157.5	78.6	541.2	252.1	338.2	145.4
August (r)	1,225.5	545.3	11.5	668.7	176.4	57.3	161.1	83.1	547.1	257.5	340.9	147.3
September (p)	1,230.6	561.7	11.3	657.6	180.4	58.5	158.7	84.5	549.7	270.3	341.8	148.4
Average RSE (%) ¹	3	3	16	6	7	6	5	4	4	5	6	7

p Preliminary

r Revised

S Does not meet publication standards because tests for identifiable and stable seasonality do not meet reliability standards

X Not applicable

¹ Average relative standard error for the latest 6-month period

² Computed using unrounded data

³ See the Explanatory Notes in the accompanying text for an explanation of 90 percent confidence intervals

Source: U.S. Census Bureau and U.S. Department of Housing and Urban Development, New Residential Construction, October 20, 2020.

Additional information on the survey methodology may be found at <www.census.gov/construction/nrc/how_the_data_are_collected/>.

New Privately-Owned Housing Units Completed

(Thousands of Units. Detail may not add to total because of rounding.)

Table 5a - Seasonally adjusted annual rate

Period	United States				Northeast		Midwest		South		West	
	Total	1 unit	2 to 4 units	5 units or more	Total	1 unit	Total	1 unit	Total	1 unit	Total	1 unit
2019												
September	1,123	852	S	268	101	64	146	110	587	478	289	200
October	1,274	920	S	348	119	59	159	119	635	509	361	233
November	1,222	915	S	297	117	63	157	114	647	522	301	216
December	1,312	903	S	402	205	58	139	108	644	512	324	225
2020												
January	1,305	906	S	389	104	78	184	126	634	467	383	235
February	1,297	1,010	S	278	104	69	193	155	650	537	350	249
March	1,280	907	S	365	78	46	202	131	706	524	294	206
April	1,212	885	S	318	59	32	169	125	709	551	275	177
May	1,180	838	S	328	95	51	183	112	621	486	281	189
June	1,245	929	S	311	71	57	186	130	670	504	318	238
July (r)	1,338	948	S	380	103	72	150	110	722	528	363	238
August (r)	1,226	902	S	315	94	54	167	108	622	488	343	252
September (p)	1,413	921	S	480	99	48	208	123	755	501	351	249
Average RSE (%) ¹	6	6	X	12	20	21	12	11	8	9	10	9
Percent Change ²												
Sep. 2020 from Aug. 2020	15.3%	2.1%	S	52.4%	5.3%	-11.1%	24.6%	13.9%	21.4%	2.7%	2.3%	-1.2%
90 percent confidence interval ³	± 11.4	± 9.0	X	± 29.8	± 31.7	± 29.2	± 35.0	± 29.9	± 16.8	± 12.0	± 15.7	± 16.9
Sep. 2020 from Sep. 2019	25.8%	8.1%	S	79.1%	-2.0%	-25.0%	42.5%	11.8%	28.6%	4.8%	21.5%	24.5%
90 percent confidence interval ³	± 11.5	± 9.6	X	± 38.9	± 33.7	± 23.2	± 34.0	± 29.3	± 20.7	± 16.6	± 23.6	± 23.8

Table 5b - Not seasonally adjusted

Period	United States				Northeast		Midwest		South		West	
	Total	1 unit	2 to 4 units	5 units or more	Total	1 unit	Total	1 unit	Total	1 unit	Total	1 unit
2018 Annual	1,184.9	840.2	9.0	335.6	107.8	54.2	168.8	124.4	593.8	448.0	314.4	213.6
2019 Annual	1,255.1	903.2	9.0	342.9	122.5	62.1	170.6	121.5	637.2	499.2	324.8	220.5
RSE (%)	2	1	18	6	7	9	4	4	2	1	3	2
2019 Year to date	916.5	653.0	7.1	256.5	83.7	45.2	129.5	89.6	466.1	359.4	237.2	158.7
2020 Year to date	936.6	664.5	7.1	265.0	65.5	40.3	132.5	88.6	497.4	371.1	241.2	164.6
RSE (%)	2	2	23	6	7	11	4	3	3	2	4	4
Year to date percent change²	2.2%	1.8%	1.3%	3.3%	-21.7%	-10.9%	2.3%	-1.2%	6.7%	3.2%	1.7%	3.7%
90 percent confidence interval ³	± 3.8	± 2.9	± 38.0	± 9.6	± 9.6	± 12.5	± 8.5	± 6.4	± 5.3	± 4.0	± 6.8	± 6.8
2019												
September	96.3	72.9	0.2	23.2	9.1	5.9	13.2	10.1	48.9	39.4	25.2	17.5
October	114.1	84.0	0.5	29.6	10.6	5.5	15.1	11.7	56.0	45.3	32.4	21.5
November	101.4	78.7	0.8	22.0	10.1	6.1	13.0	9.8	53.9	44.6	24.5	18.2
December	123.1	87.6	0.6	34.9	18.0	5.2	13.0	10.3	61.3	49.8	30.8	22.2
2020												
January	90.2	62.5	0.7	27.0	7.1	5.4	12.3	8.2	44.7	33.1	26.1	15.8
February	90.8	70.8	0.6	19.4	7.2	4.7	12.4	9.7	46.5	38.6	24.8	17.8
March	101.7	72.3	0.6	28.7	5.6	3.1	15.5	9.9	57.2	42.9	23.4	16.5
April	94.6	69.3	0.7	24.6	4.3	2.2	13.5	10.1	55.7	43.5	21.0	13.4
May	98.5	69.5	1.2	27.7	7.9	4.1	15.3	9.3	51.6	40.3	23.6	15.9
June	110.7	81.8	0.4	28.5	6.7	5.4	16.4	11.2	58.5	43.3	29.2	21.8
July (r)	117.1	79.5	0.9	36.7	9.2	6.2	12.9	9.0	63.7	45.0	31.3	19.3
August (r)	112.0	79.5	0.9	31.7	8.5	4.5	15.8	9.9	56.5	43.0	31.2	22.1
September (p)	121.1	79.2	1.0	40.8	9.0	4.7	18.5	11.2	63.0	41.4	30.6	22.0
Average RSE (%) ¹	6	6	55	12	20	21	12	11	8	9	10	9

p Preliminary

r Revised

S Does not meet publication standards because tests for identifiable and stable seasonality do not meet reliability standards

X Not applicable

¹ Average relative standard error for the latest 6-month period

² Computed using unrounded data

³ See the Explanatory Notes in the accompanying text for an explanation of 90 percent confidence intervals

Source: U.S. Census Bureau and U.S. Department of Housing and Urban Development, New Residential Construction, October 20, 2020. Additional information on the survey methodology may be found at <www.census.gov/construction/nrc/how_the_data_are_collected/>.